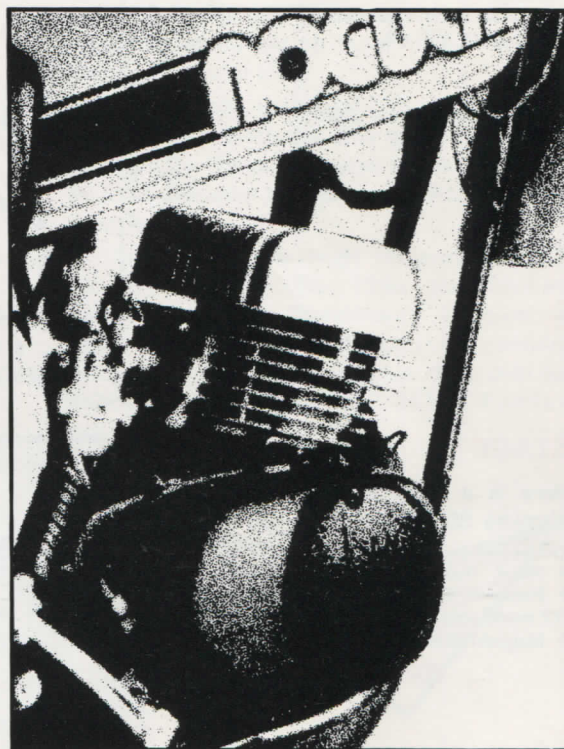
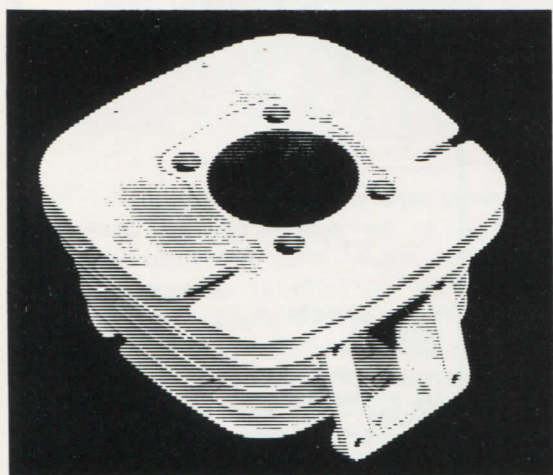


# NOGUCHI

## FACTORY WORKS KITS

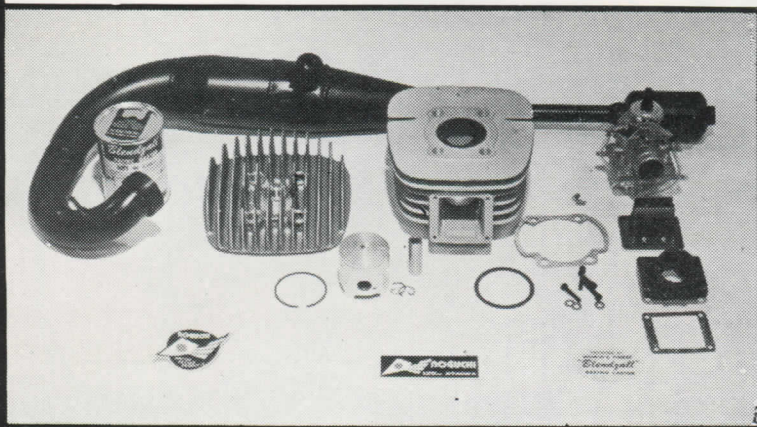
### FOR YAMAHA



# NOGUCHI

## KITS for YAMAHA 125cc

Stage II 1975 Kit shown. Kits for 1969 to 1973 models also include:  
Connecting Rod • Big End Rod Bearing



### STAGE II

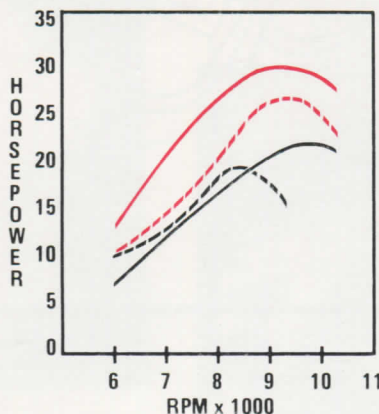
Has everything a Yamaha 125 needs to boost the stock engine to a whopping 30 H.P. Increase torque and broaden the power range. All Noguchi components are designed to be the highest quality you can buy.

**Kit Includes:** • Chromed Alloy Cylinder • Alloy Cylinder Head • Head Gasket • Cylinder Gasket • Piston w/ pin and clips • Piston Ring • Large Volume Carb Manifold • Reed Valve Gasket • Large Volume Reed Valve • Mikuni 28mm Aluminum Carb • Carb Clamp • High Pipe or Low Pipe • Main Jets (2) • Blendzall Racing Castor • Noguchi Decals & Instructions.

**STAGE I AND STAGE II KITS ARE MADE FOR YAMAHA AT, ATM, DT, MX AND YZ 125.**

(Stage II Kits can also be used to convert Yamaha CT, DT or MX175 to 125 cc.)

Specify model and year when ordering.



**Noguchi Stage II**  
30/8,900

**Noguchi Stage I**  
27/9,200

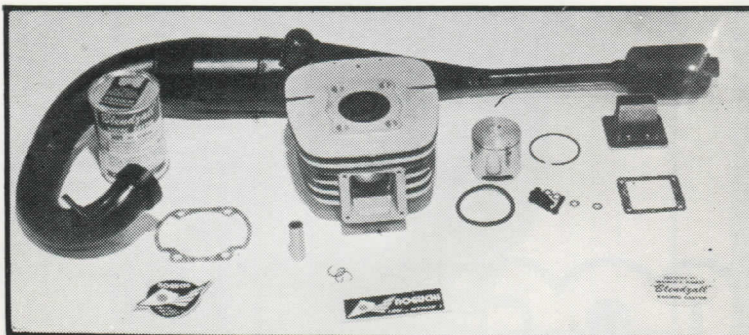
**Yamaha 1975 MX125B**  
YZ125 22/10,000

**Yamaha 1973 AT3MX**  
Max. HP (BHP/RPM)  
20/8,500

### STAGE I

Economical power! This kit is specially designed to give you the largest power gain at the lowest cost. 25% increase in H.P.

**Kit Includes:** • Chromed Alloy Cylinder • Head Gasket • Cylinder Gasket • Piston w/pin & clips • Piston Ring • Reed Valve Gasket • Large Volume Reed Valve • High Pipe or Low Pipe • Blendzall Racing Castor • Noguchi Decals & Instructions.

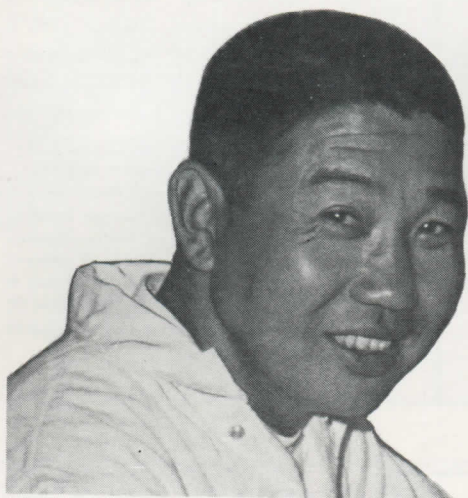


Stage I 1975 Kit shown. Kits for 1972 and 1973 models also include:  
Connecting Rod • Big End Rod Bearing

# NOGUCHI and

# YAMAHA . . . .

## A WINNING TEAM!



Ever wonder what those super secret development engineers in Japan are up to? Ever wish you could buy some of the resulting ultra-horsepower parts before they are shelved or are installed on production motorcycles?

Most of us have been in this position, and now relief is in sight for Yamaha owners pondering these questions. NOGUCHI KITS are the answer to the privateers' dreams of being competitive. As *Minicycle* said, "The NOGUCHI KIT . . . is nothing short of astounding." — and *Cycle World* stated, "There just isn't anything around that can match it (Noguchi) in the horsepower department!" — and *Cycle News* concluded, "If you want the fastest "factory" Yamaha on the course, better make it a Noguchi."

Who is Noguchi? Those inside the international racing scene have heard the name Noguchi throughout the past few racing seasons. Through the efforts of Noguchi's Worldwide Marketing both road racers and motocrossers have been able to obtain either complete bikes or highly developed parts that bear the stamp of Taneharu Noguchi.

Noguchi began what has developed into a lengthy connection with Yamaha in 1955 when he became a member of their factory road racing team. He successfully campaigned the "better machine" brand in Japan and throughout Europe for several years; then in 1961 Yamaha appointed Noguchi as their Race Team Manager. In his new position he directed his energies toward research and development work with Yamaha's "works" road racers and motocross bikes. Noguchi's contract with Yamaha allows him to apply the information gained through the factory racing efforts to his own business which not only produces bikes, but also parts conversion kits that enable an enthusiast to build his own winning Noguchi-Yamaha bike.

The Noguchi sponsored "Team Dirty" Racing Team has been the only group of riders to successfully compete against the factory teams in AMA National motocross and AMA National road racing.

Noguchi markets High Performance KITS for Yamaha 80cc, 100cc, 125cc, and 175cc machines, and High Performance Products for other makes and models. Dealers! For complete information on setting up your dealership as a NOGUCHI PERFORMANCE CENTER write or call us.

