



SILENCERS

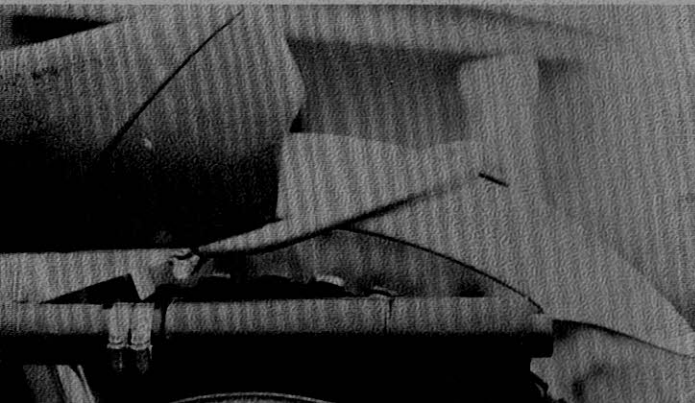


MANUFACTURING CO.

Builders of Silencers and Spark Arresters

7738 SCOUT AVENUE
 BELL GARDENS, CALIFORNIA 90201
 Phone 927-3393

SILENCER/SPARK ARRESTER



For easy installation
 a clamp is provided —
 no springs or welding necessary

Overall length 8 inches

Diameter of main body 2 inches

Weight 11 oz.

Available in 26 sizes



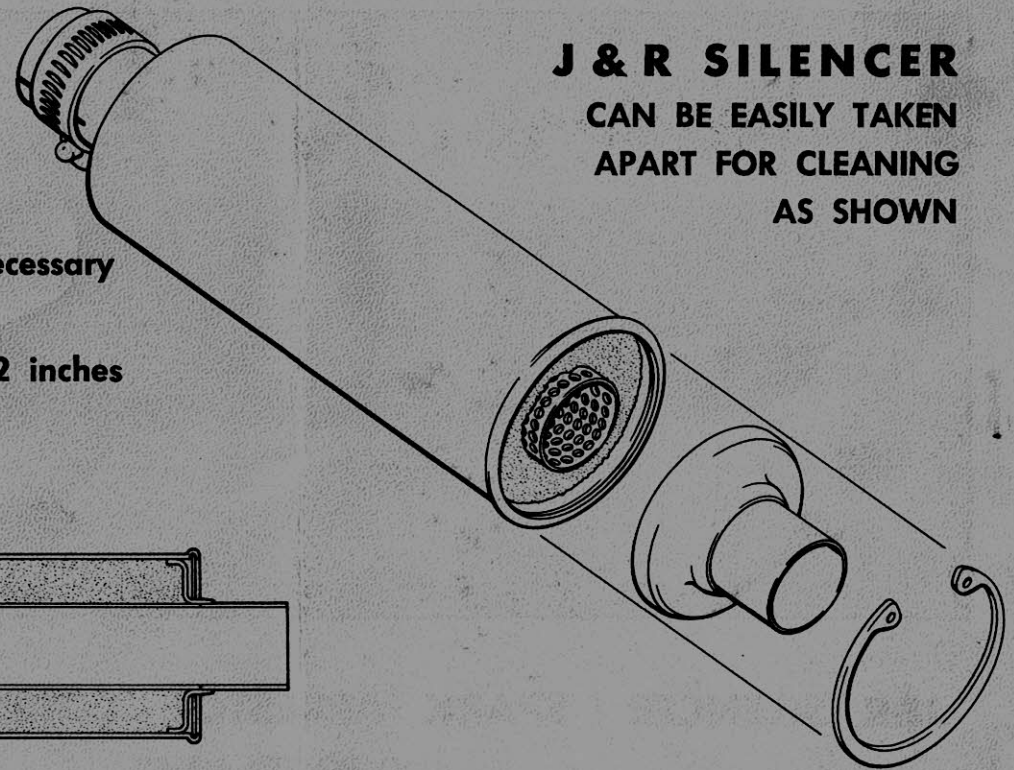
J & R has developed a silencing device to be used on expansion chambers. A considerable reduction in the noise level is now possible with no loss in power. The principle of operation is much the same as a gun silencer. After much use, the silencer can be easily taken apart for cleaning. After extended usage a replacement kit is available which includes new deadening material and a new perforated core which will bring your silencer back to new operation.

BLACK each \$9.95
REPLACEMENT KIT each 2.00

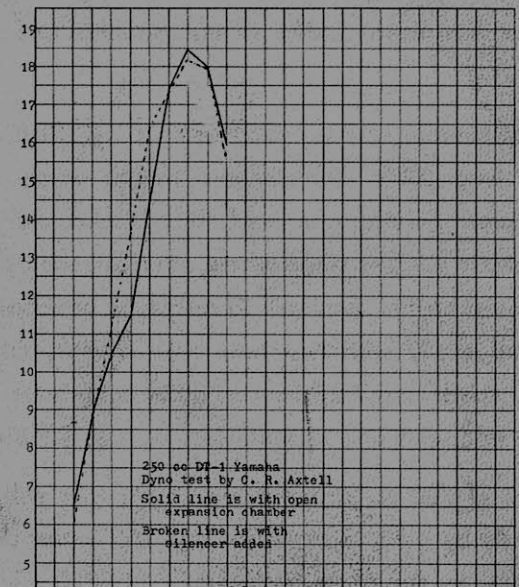
SILENCER REPLACEMENT KIT
 XC1 to fit Silencers from .709 through 1.187
 XC2 to fit Silencers from 1.250 through 2.000
 (California residents add 5 % sales tax)



J & R SILENCER
CAN BE EASILY TAKEN
APART FOR CLEANING
AS SHOWN



DYNO TEST CHART

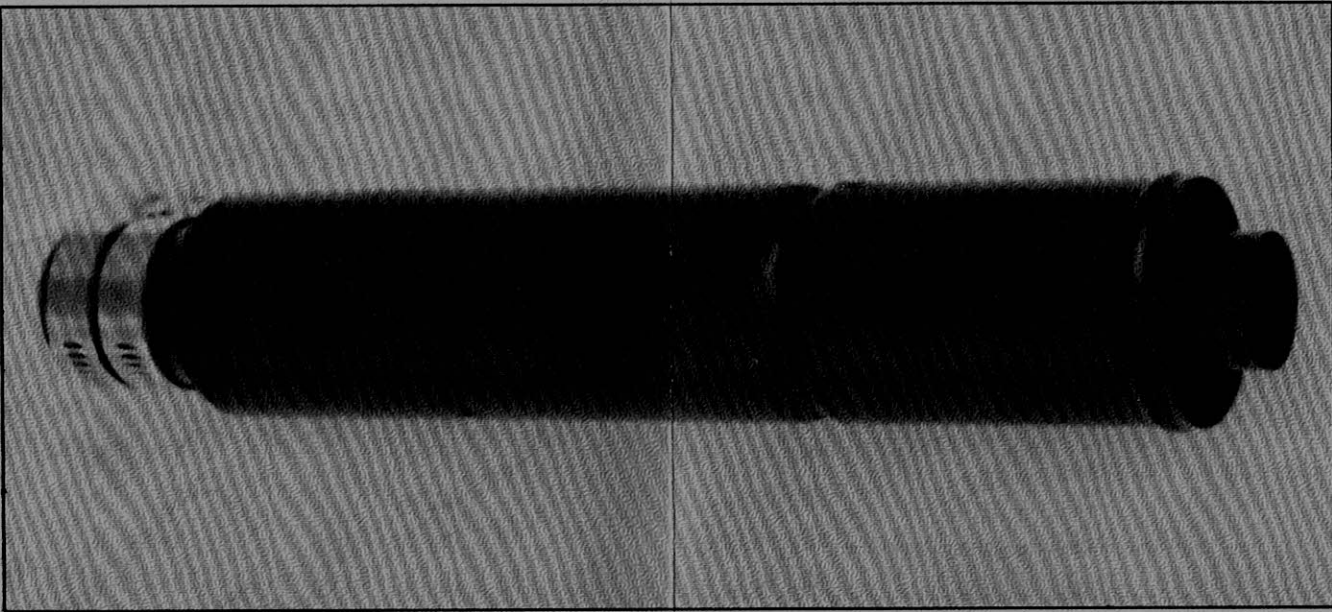




MANUFACTURING CO.

Builders of Silencers and Spark Arresters

7738 Scout Avenue
Bell Gardens, Calif., 90201
Phone 927-3393



J&R SILENCER / SPARK ARRESTOR COMBINATION UNIT

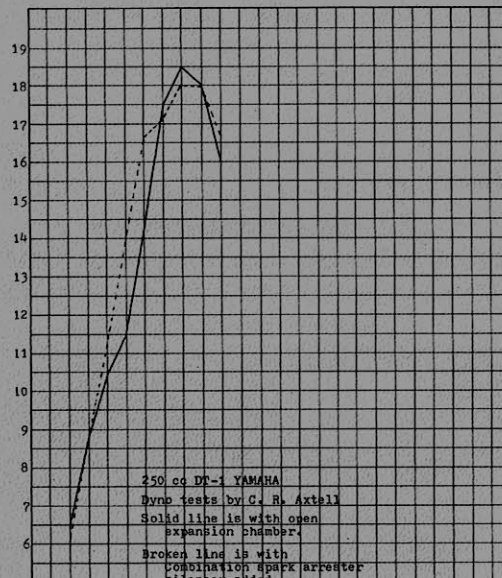
"NO POWER LOSS"

Now available through the development and research of J&R Manufacturing Co., a combination Spark Arrestor/Silencer has been added to our popular line of J&R Silencers.

The combination unit is available in 26 sizes and is 11 1/2 inches long, 2" in diameter and weighs barely 20 ozs. U.S. Forest Service approved, this combo unit has a rebuildable silencer stage where after extended usage a replacement kit is available to restore to new operation. Installed easily with two hose type clamps, this dyno tested spark arrestor/silencer adds mid-range horsepower and with only a small loss at high R.P.Ms.

Engines of 500 cc, 2 stroke and 250 cc four will run as indicated by dyno chart (large flow unit under development now for the larger 4 strokes)

DYNO TEST CHART



Distributed by:

MOPAD

9045 - 16th Ave. S.W. — Seattle, Wn. 98108
(206) RO 2-64